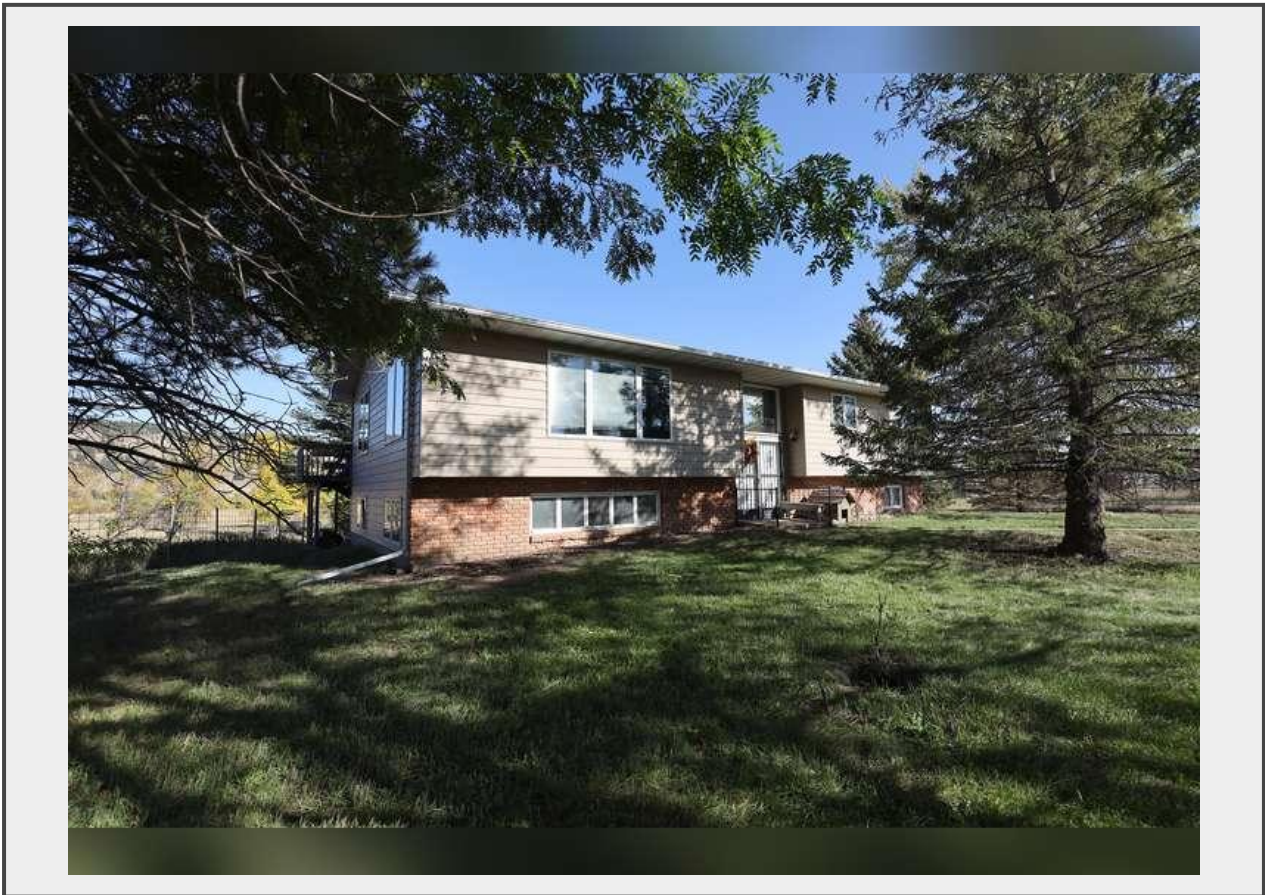


Sale Name: Piedmont Valley Land Auction

LOT 2 - Tract 2



Description

TRACT 2; The Homestead Tract, consisting of 40.0+/- acres, with a 3008 sqft 5 bedroom-3 bath home/w attached garage, situated in privacy and seclusion. Mature pine, elm, russian olive, lilac and spruce trees grace the property. Outbuildings include a small barn, shop and shed. A private well provides domestic water and Little Elk Creek traverses the property!

SE1/4NE1/4 LESS ROW, SEC 4, T3N, R6E, BHM, MEADE CO., SD

Quantity: 1



[https://
auctions.hewittlandcompany.com/](https://auctions.hewittlandcompany.com/)